

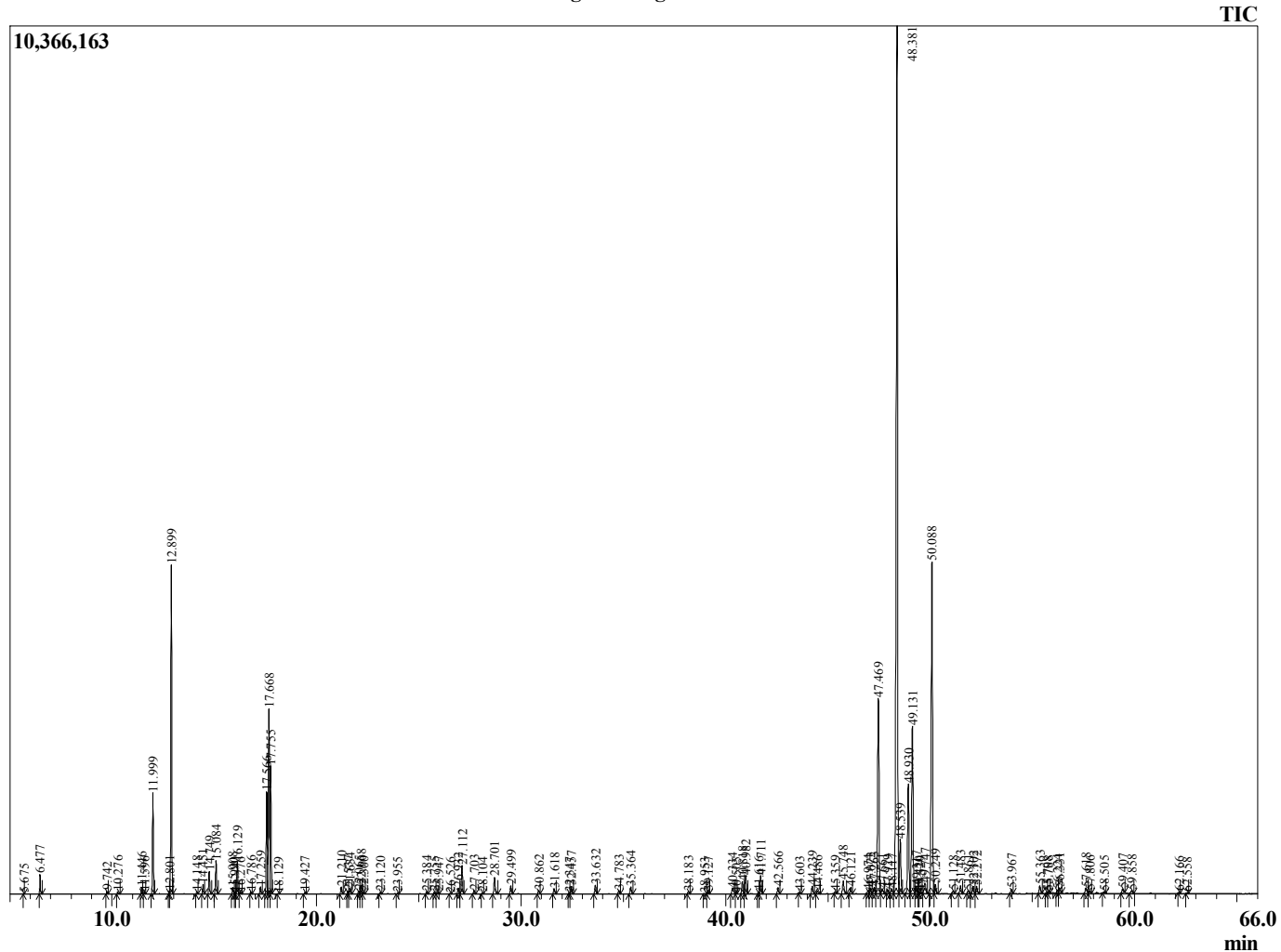
Sample Information

Analyzed : 6/17/2019 8:34:37 PM
 Sample Type : Essential Oil
 Sample Name : Zingiber officinale
 Injection Volume : 0.10

Ginger Cochin
 Lot# CHK16-KW
 Country: China



Chromatogram Zingiber officinale



R.Time	Name	Area%
5.675	Toluene	0.01
6.477	Hexanal	0.35
9.742	2-Heptanone	0.06
10.276	2-Heptanol	0.06
11.446	Tricyclene	0.15
11.596	alpha-Thujene	0.04
11.999	alpha-Pinene	2.33
12.801	alpha-Fenchene	0.06
12.899	Camphene	7.94
14.148	Sabinene	0.07
14.451	beta-Pinene	0.24
14.749	6-Methyl hept-5-en-2-one	0.56
15.084	Myrcene	0.85
15.908	Octanal	0.18
15.990	Unidentified	0.02
16.129	alpha-Phellandrene	0.81
16.276	delta-3-Carene	0.03
16.786	alpha-Terpinene	0.06
17.259	para-Cymene	0.19
17.566	Limonene	2.76
17.668	beta-Phellandrene	5.12
17.755	1,8-Cineole	3.27
18.129	Unidentified	0.02
19.427	gamma-Terpinene	0.04
21.210	Terpinolene	0.20
21.537	2-Nonanone	0.09
21.634	Rosefuran	0.17
22.065	Unidentified	0.09
22.168	Linalool	0.26
22.300	Nonan-2-ol	0.05
23.120	Unidentified	0.06
23.955	Unidentified	0.02
25.384	Camphor	0.06
25.755	Citronellal	0.05
25.947	trans-beta-Terpineol	0.06
26.526	Unidentified	0.02
26.932	Isoborneol	0.18
27.112	Borneol	0.88
27.703	Terpinen-4-ol	0.10
28.104	para-Cymen-8-ol	0.02
28.701	alpha-Terpineol	0.55
29.499	Decanal	0.25
30.862	Citronellol	0.11
31.618	Neral	0.16
32.347	Unidentified	0.03
32.457	Geraniol	0.24
33.632	Geranial	0.28
34.783	Bornyl acetate	0.11
35.364	2-Undecanone	0.24
38.183	delta-Elementene	0.08
38.953	alpha-Cubebene	0.01
39.127	Citronellyl acetate	0.06
40.334	Isoledene	0.26
40.505	Unidentified	0.02
40.818	alpha-Copaene	0.42
40.982	Geranyl acetate	0.60

R.Time	Name	Area%
41.616	beta-Cubebene	0.04
41.711	beta-Elemene	0.63
42.566	cis-alpha-Bergamotene	0.22
43.603	beta-Caryophyllene	0.04
44.239	gamma-Elemene	0.27
44.486	trans-alpha-Bergamotene	0.12
45.359	Unidentified	0.06
45.748	trans-beta-Farnesene	0.49
46.121	Alloaromadendrene	0.20
46.974	Selina-4,11-diene	0.11
47.072	trans-Cadina-1(6),4-diene	0.20
47.263	gamma-Curcumene	0.24
47.469	Ar-Curcumene	7.26
47.661	Unidentified	0.20
47.929	beta-Selinene	0.12
48.117	(Z,Z)-alpha-Farnesene	0.18
48.381	alpha-Zingiberene	31.88
48.539	trans-Muurolo-4(14),5-diene	1.90
48.930	(E,E)-alpha-Farnesene	3.70
49.131	beta-Bisabolene	6.04
49.317	Unidentified	0.26
49.420	Unidentified	0.03
49.529	Unidentified	0.04
49.747	Selina-3,7(11)-diene	0.50
50.088	beta-Sesquiphellandrene	11.53
50.249	trans-gamma-Bisabolene	0.32
51.128	Unidentified	0.10
51.483	Elemol	0.27
51.861	cis-Sesquisabinene hydrate	0.12
52.102	Germacrene B	0.25
52.272	trans-Nerolidol	0.27
53.967	trans-Sesquisabinene hydrate	0.14
55.363	Zingiberenol	0.27
55.708	Unidentified	0.03
55.788	10-epi-gamma-Eudesmol	0.05
56.224	Unidentified	0.10
56.331	Unidentified	0.17
57.618	beta-Eudesmol	0.25
57.806	Unidentified	0.09
58.505	Unidentified	0.04
59.407	11-alpha-H-Himachal-4-en-1-beta-ol	0.14
59.858	Unidentified	0.12
62.166	Unidentified	0.03
62.558	Unidentified	0.02
		100.00